

RoBoard RB-100&110

Windows XP Display Driver update for 8.9inch panel

V 1.0, Jul 2010
XGI : R1.14.03

Requirement

- ◆ RoBoard RB-100 and/or RB-110
- ◆ VGA card with updated BIOS
- ◆ XGI display driver for 8.9 panel

Please download file from

http://www.roboard.com/files/rp-089/xgi_r11403.zip

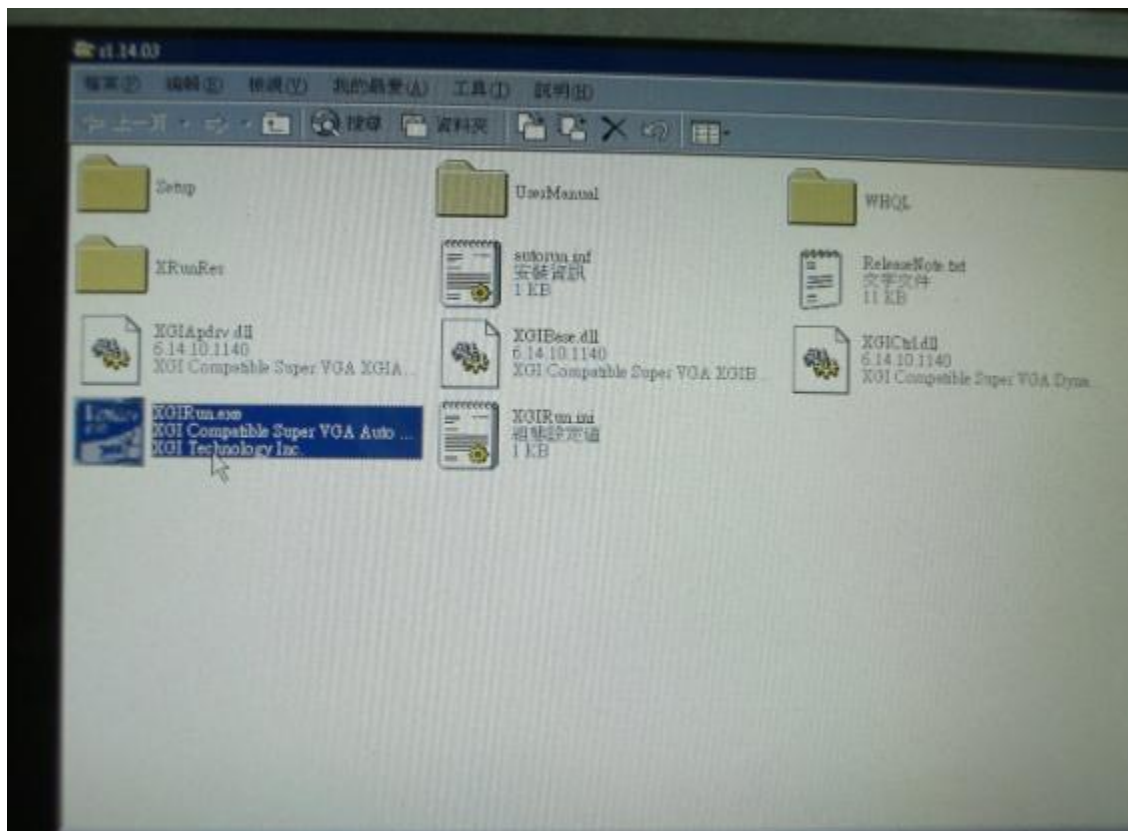
Step 1.

- Boot into Windows XP on RoBoard. You will see that the screen is not full on the 8.9inch panel. Therefore, we must install the dedicated display driver for Windows XP.



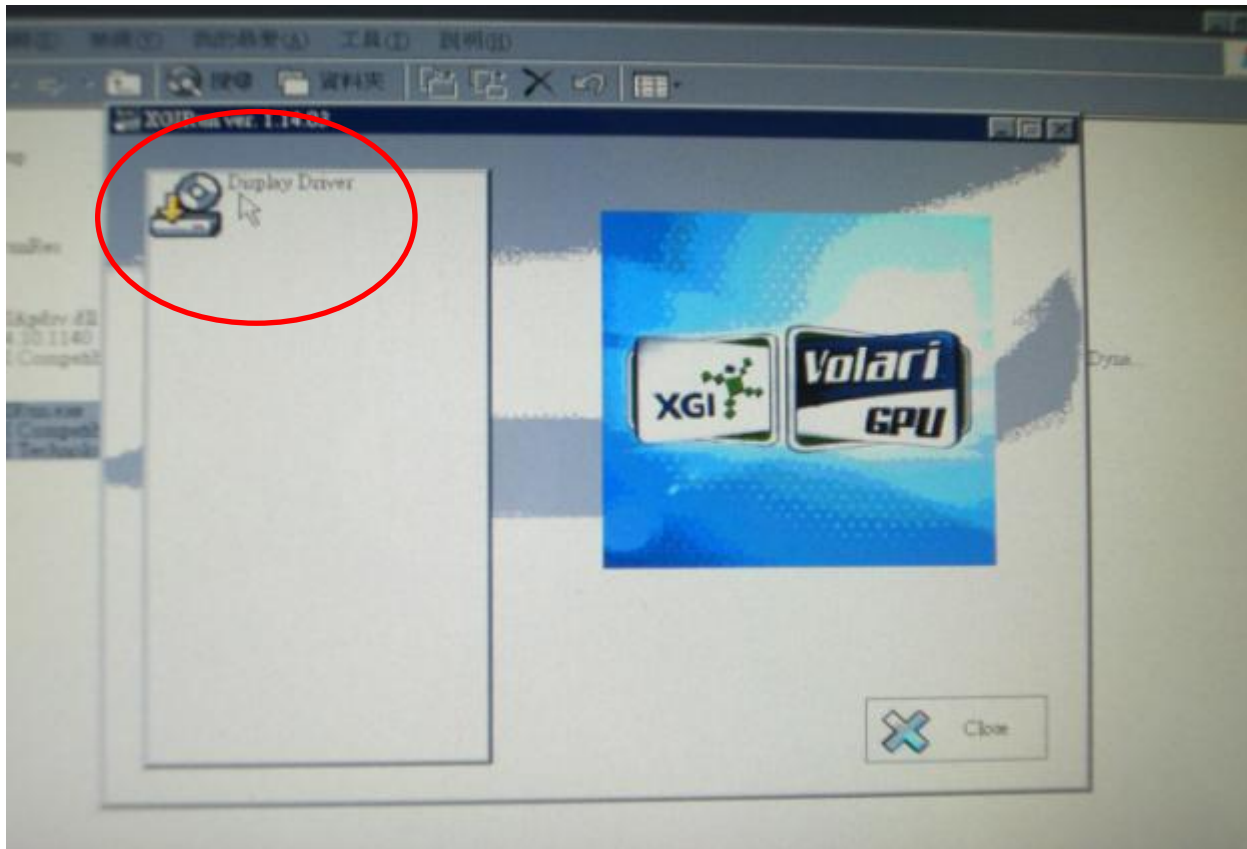
Step 2.

- Decompress XGI_r11403.zip and click XGIR.exe



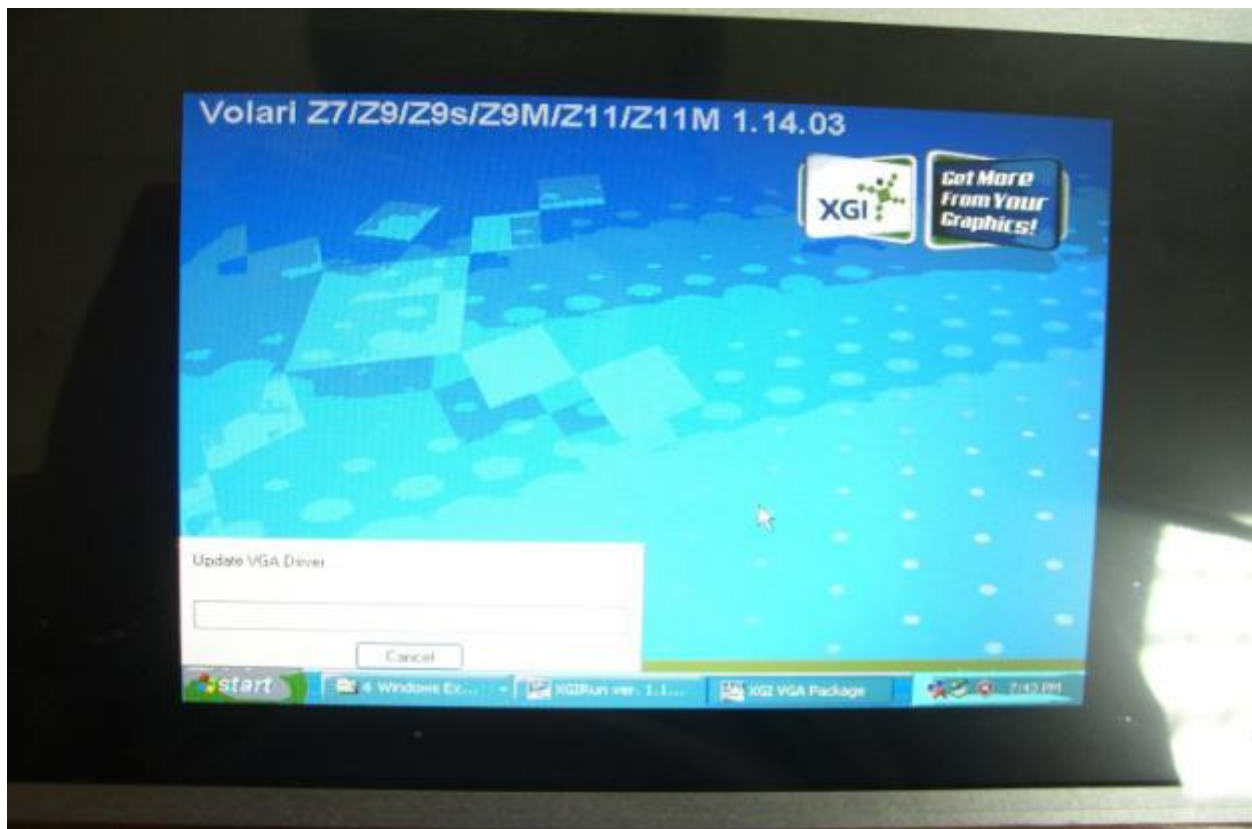
Step 3.

- Click “Display Driver



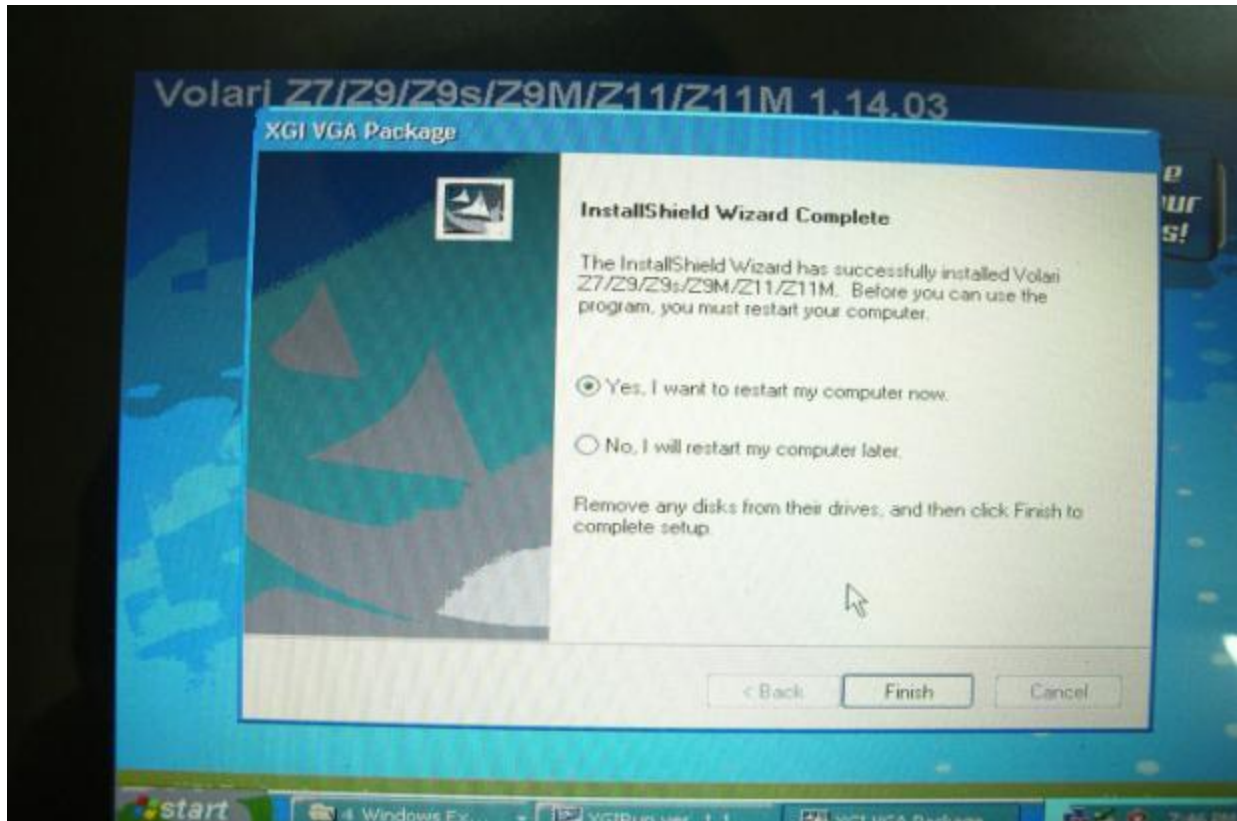
Step 4.

- Wait for the driver installation finished



Step 5.

- Click “finish” to restart



Step 6.

- After rebooting, choose “Display Properties”



Step 7.

- Choose 1024 x 600 x 32 bit and click “OK”



Step 8.

- At the last, the screen is full on the 8.9inch panel.



Thank You

tech@roboard.com